

Polymorphic amyloid degeneration of the cornea

Category(ies): Cornea

Contributor: [Jesse Vislisel, MD](#)

Photographer: Brice Critser, CRA



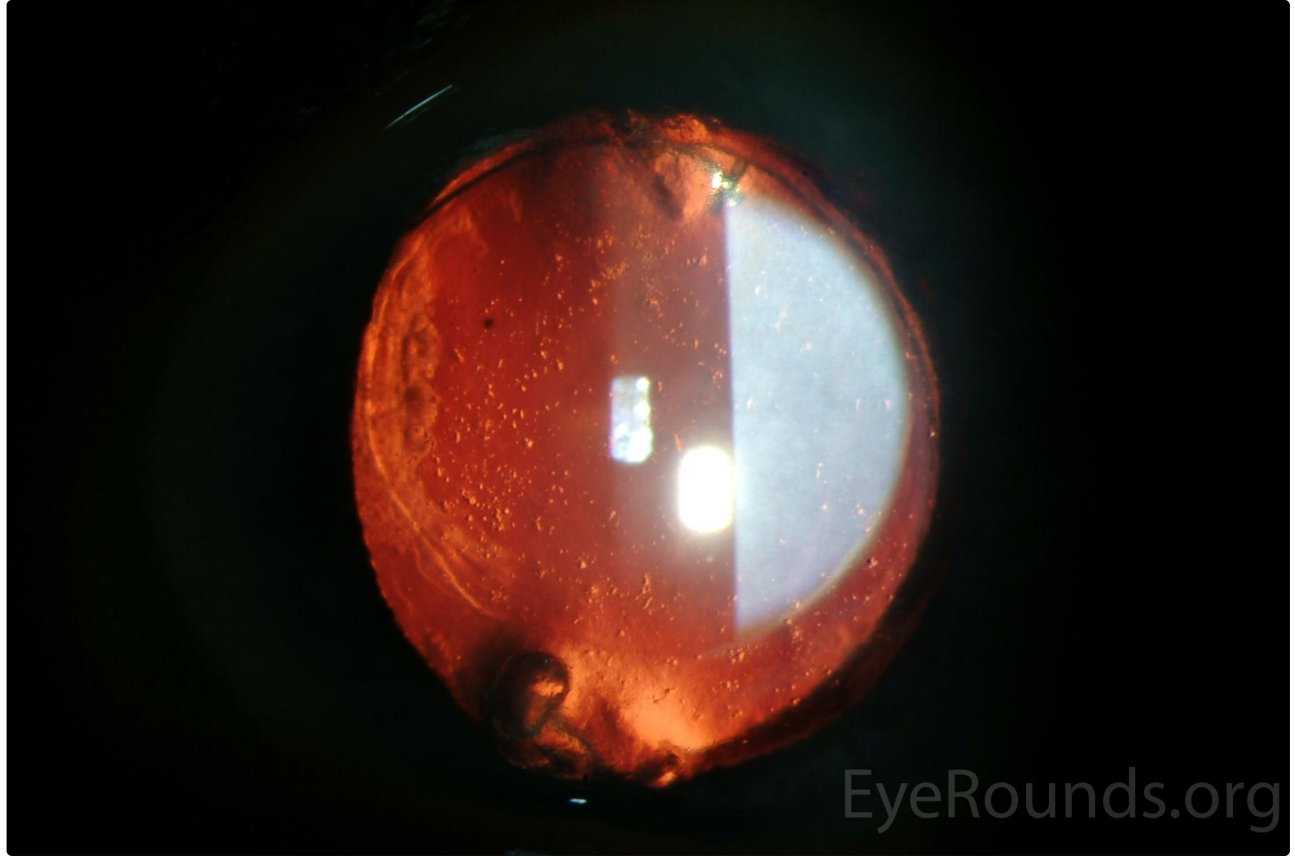
Polymorphic amyloid degeneration is a bilateral corneal degeneration that develops later in life. It results in refractile, stellate flecks or irregular filaments in the mid to deep corneal stroma with intervening clear spaces. These photographs show the appearance of polymorphic amyloid degeneration in a patient before and after she underwent superficial keratectomy for Salzmann nodular degeneration.



polymorphic amyloid degeneration in a patient before surgery

[Enlarge](#)

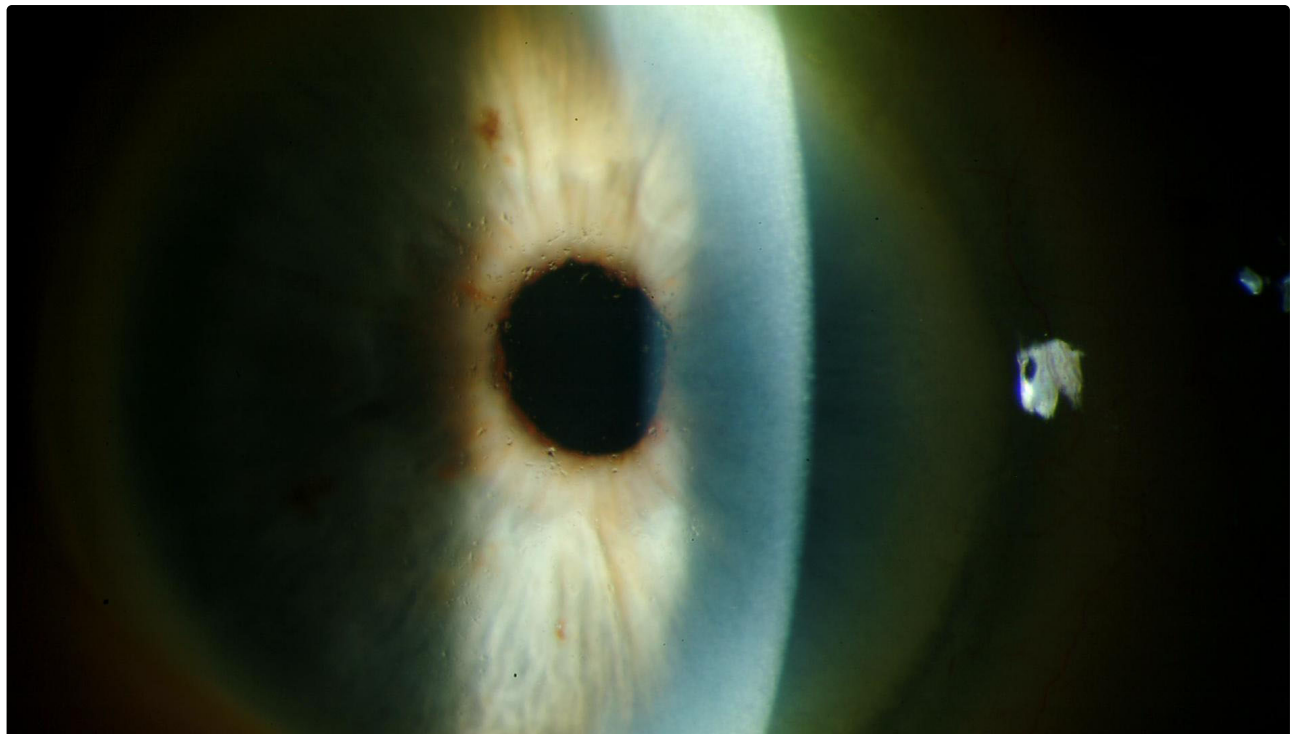
[Download](#)



polymorphic amyloid degeneration in a patient before surgery

[Enlarge](#)

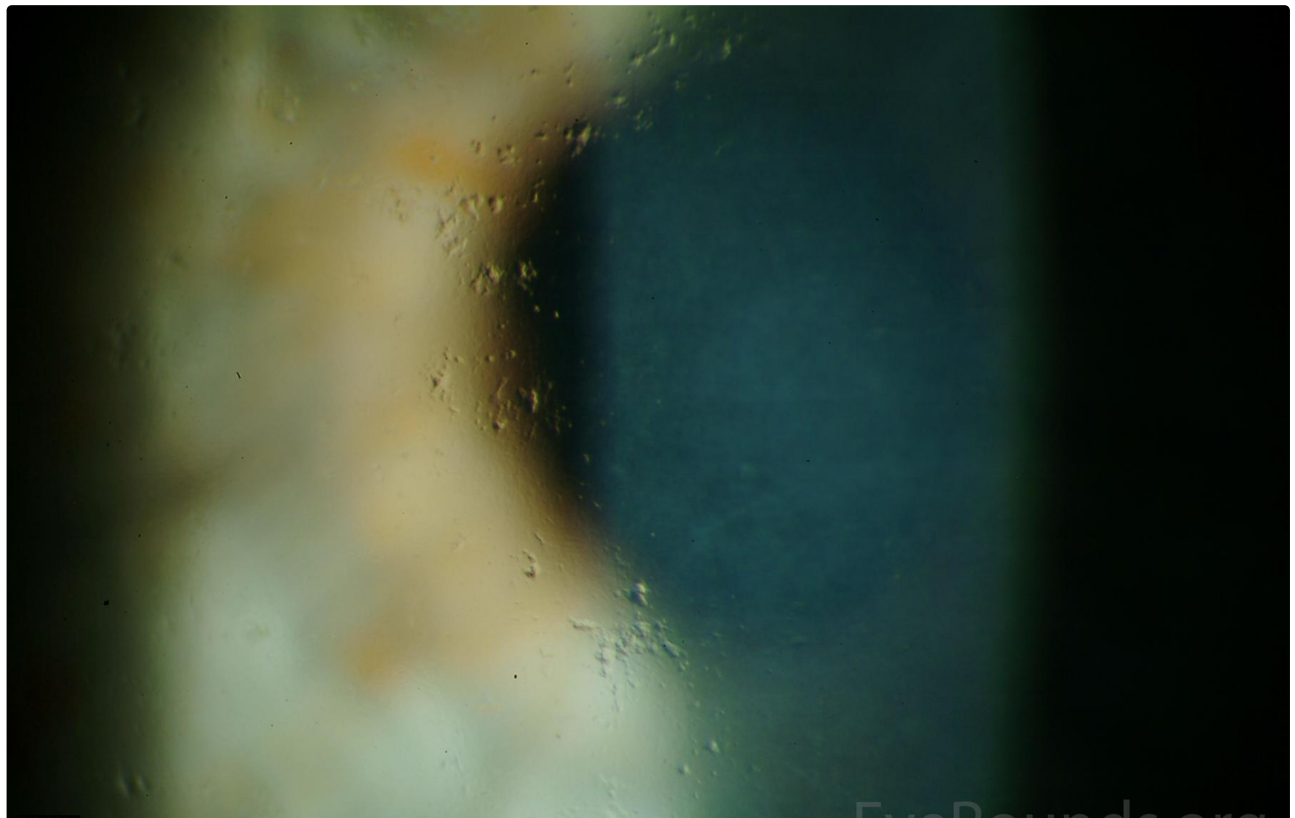
[Download](#)



polymorphic amyloid degeneration in a patient after she underwent superficial keratectomy

[Enlarge](#)

[Download](#)



polymorphic amyloid degeneration in a patient after she underwent superficial keratectomy

 Enlarge

 Download

Image Permissions:



Ophthalmic Atlas Images by EyeRounds.org, The University of Iowa are licensed under a Creative Commons Attribution-NonCommercial-NoDerivs 3.0 Unported License.

Address

University of Iowa
Roy J. and Lucille A. Carver College
of Medicine
Department of Ophthalmology and
Visual Sciences
200 Hawkins Drive
Iowa City, IA 52242

[Support Us](#)

Legal

Copyright © 2019 The University of
Iowa. All Rights Reserved
[Report an issue with this page](#)
[Web Privacy Policy](#) |
[Nondiscrimination Statement](#)

Related Links

[Cataract Surgery for Greenhorns](#)
[EyeTransillumination](#)
[Gonioscopy.org](#)
[Iowa Glaucoma Curriculum](#)
[Iowa Wet Lab](#)
[Patient Information](#)
[Stone Rounds](#)
[The Best Hits Bookshelf](#)

**EyeRounds Social
Media**

Follow
  

[Receive notification of new cases,
sign up here](#)
[Contact Us](#)
[Submit a Suggestion](#)